

# LEXXY

LIVEBOARD





# LEXXY

## Specification

Boat length : 26 meters

Width : 5,5 meters

Built : 2019

Cruising Speed : 8-11 knot

Main engine : Mitsubishi 6d22

Dinghy : 6 meters with

Yamaha endure 40 hp

Safety equip ment : GPS Garmin

Map 585 Marine, 25 Life jacket.

4 Life Bouy

Guest Capacity : 22 person

Crew : 7 Person

Water supply : 7000L

6 Cabin with Ac

6 Bathrooms and toilets

Entertainment : Karaoke & music





# Testimonial Public Figure



**AWKARIN (KARIN NOVILDA)**  
**SELEBGRAM & INFLUENCER**

Pelayanannya sangat ramah, kemudian tour guidenya sangat informatif dan scheduleny sangat teratur. Mereka tau apa yang mereka lakukan, gak ada waktu yang terbuang sedikitpun.



**AYU TING TING**  
**AKTRIS & PENYANYI**

Thank you banget experience tripnya, pokoknya keren banget selama perjalanan. Kapal nya bersih, enak, nyaman, masakannya juga enak-enak, crewnya ramah-ramah, pokoknya top banget.



**KEANU**  
**SELEBGRAM & INFLUENCER**

Seneng banget bisa ikut trip ini. Crew-crewnya bener-bener kaya keluarga. Sayang banget sama Labuan Bajo.



**HERMANSYAH FAMILY**  
**PENYANYI & SELEBRITI**

Diatas kapal itu bener-bener menyenangkan banget dari servicenya yang ramah dan kapal Lexxy yang bagus banget, cantik banget, bener bener gue naik kaya yang terkagum-kagum.



**SALSHABILLA ADRIANI**  
**AKTRIS & PENYANYI**

Ikut trip baeng Bersama kapal Lexxy super senang, seru banget, pelayanannya memuaskan, makanannya enak.



**ERICA CARLINA**  
**SELEBGRAM & INFLUENCER**

Sebagian dari kita semua ada yang belum berani liburan dan ini kesempatan pertama kali untuk kita berdani liburan dan itu pilihannya di Labuan Bajo.





# Lexxy

An intimate setting, six cozy cabins, and a distinctive wooden design. Lexxy is the ideal medium phinisi if you are ready to set out on an expedition around Komodo island. Inspired on a traditional Phinisi, this 26 - meters boat is perfect to accommodate up to 22 people , The en-suite master cabin on the top deck includes a panoramic view, to enjoy natures spectacles from sunrise until sunset. Below deck, a double and twin room that can accommodate twenty guests. Daily activities evolve in and around the water exquisite if you are a nature lover and in for an adventure.

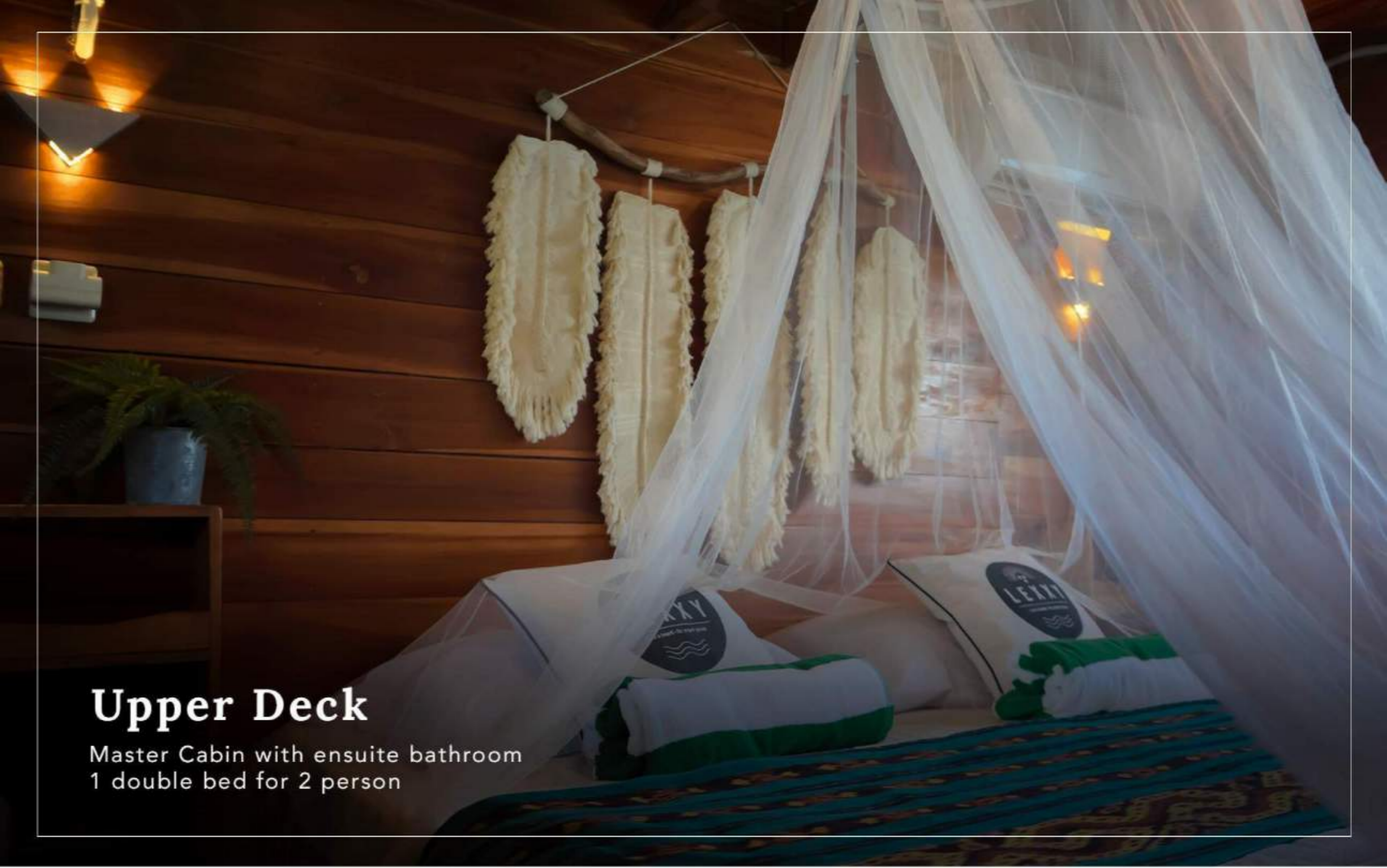
Lexxy can satisfy the thirst for discovery of mesmerizing surroundings. The crew is discreet and professional, making your stay unforgettable. Try the tasty dishes our chef prepared while you catch the last sun rays of the day on the top deck. And if you are up for it, the skipper can teach you how to sail.



# The Boat Cabin



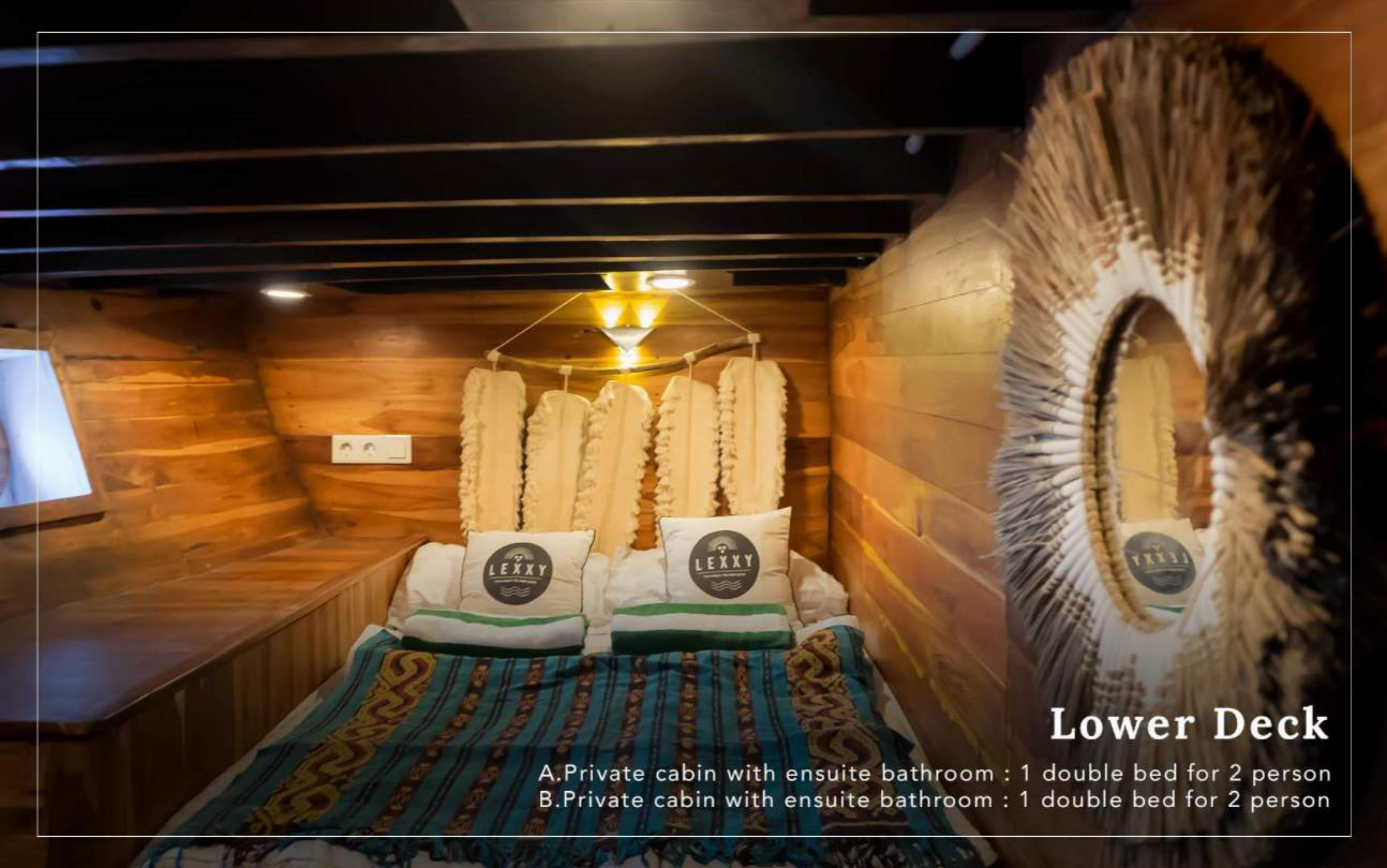




## Upper Deck

Master Cabin with ensuite bathroom  
1 double bed for 2 person





## Lower Deck

- A. Private cabin with ensuite bathroom : 1 double bed for 2 person
- B. Private cabin with ensuite bathroom : 1 double bed for 2 person





## Main Deck

A. Sharing cabin for 6 person : 4 double bed bunkbed + 2 single bed bunkbed  
B. Sharing cabin for 6 person : 4 double bed bunkbed + 2 single bed bunkbed





## Main Deck

Sharing cabin for 4 person : 4 single bed bunkbed



# Karaoke & Music

Got a singing mood? Don't worry about getting bored on trip. Karaoke is right here to help you sing your heart out with your friends!











# FOOD

We deserve delicious food  
during trip





## Price Include

- Transport Airport – Hotel
- Meals During Trip
- Snorkeling Set
- Local Guide / Tour Leader
- Snack, Coffe / Tea During Trip
- Life Jacket
- Documentation Set & Drone
- Editing Video 1 Minute for Instagram

## Price Exclude

- Transportasi dari Kota Asal
- Tipping Leader / Crew Boat
- Tiket Entrance Komodo
- Personal Expenses

## Additional

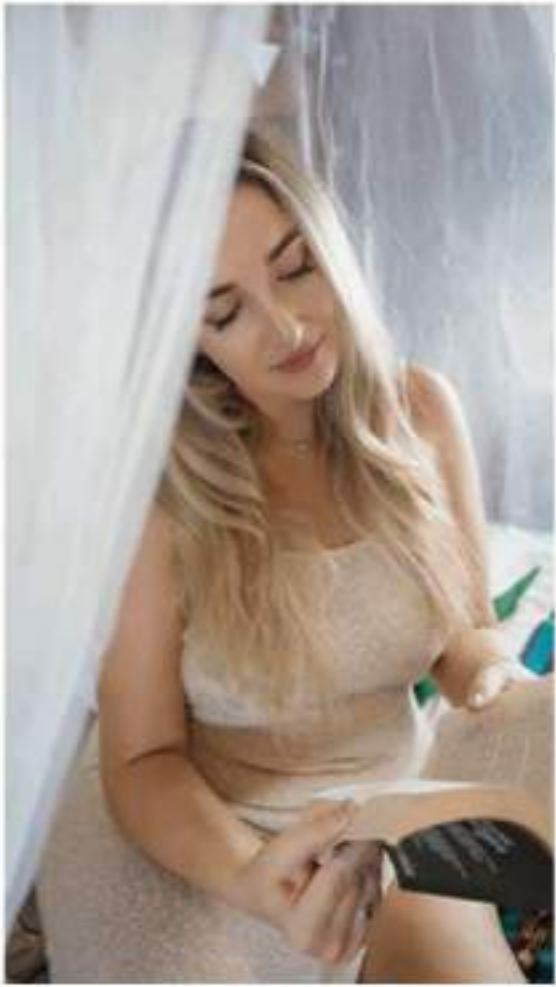
- Tiket Taman Nasional
  - \* Lokal IDR 150.000
  - \* Foreigner IDR 500.000











## Photo Gallery





**Lexxy  
Liveaboard**

**Enjoy Sailing Komodo Island  
with Lexxy Liveaboard**





