



LAMIMA



WHERE LUXURY &
TRADITION INTERTWINE

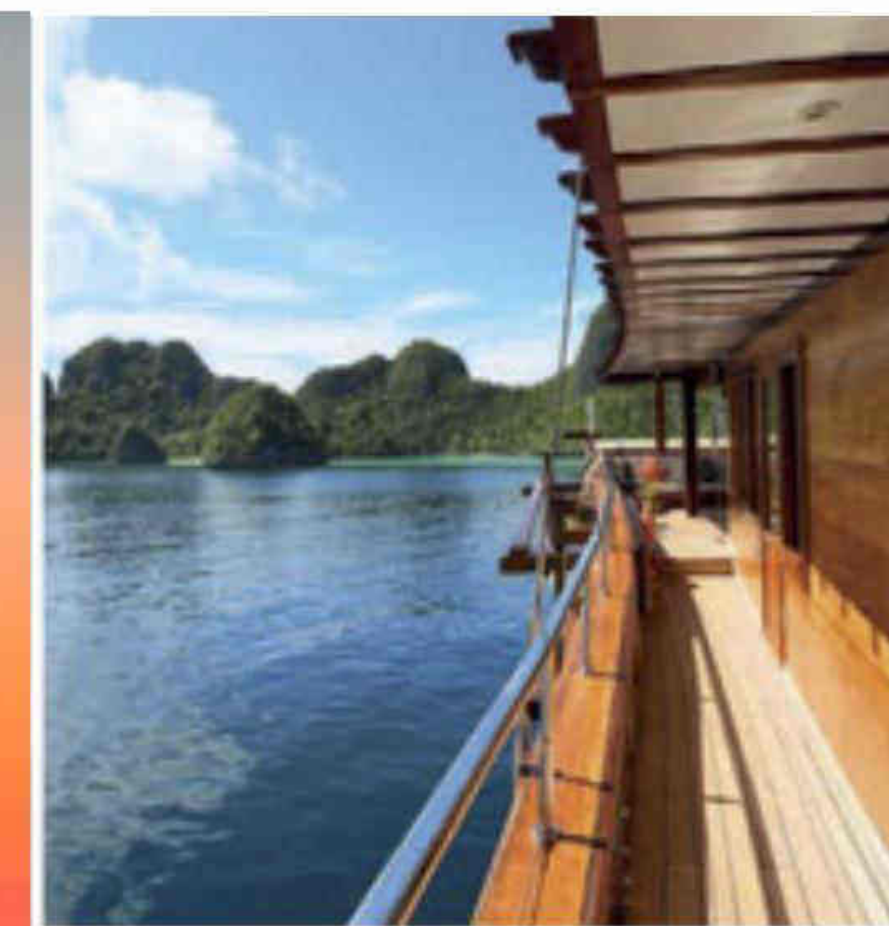
Our Luxury Yacht

THE LATEST IN MODERN YACHT TECHNOLOGY
COMBINED WITH THE ELEGANCE AND STYLE OF
INDONESIA'S TRADITIONAL PHINISI

Specifically created to sail the beautiful sapphire waters of South East Asia, the 65 metre Lamima is the ultimate luxury sailing yacht. Designed by esteemed yacht architect Marcelo Penna of Barcelona and constructed by Indonesia's traditional boat builders, Lamima seamlessly combines the authenticity of the two masted phinisi with the latest in yacht design and technology.

AN OVERVIEW OF LAMIMA

- At 65 metres long Lamima is one of the world's largest 5 star wooden sailing yachts offering a greater range and capacity than any other vessels in the region.
- Crew of 19 including dive instructors, chefs and spa therapists.
- Spacious saloon furnished with a bar, lounge and a huge dining table plus expansive external deck space for al fresco dining and relaxing.
- Up to 14 guests in seven elegant and spacious staterooms including a lavish master suite, four double and two twin cabins, all with ensuite bathrooms.
- Only luxury yacht with Indonesian flag to be RINA (Registro Italiana Naval) certified, an internationally recognised classification that ensures the highest standards of safety and quality of build.



LAMIMA

A 65M 5 STAR LUXURY YACHT

SAILING THE WATERS OF SOUTH EAST ASIA,
A KALEIDOSCOPE OF EXOTIC SIGHTS, TASTES
AND EXPERIENCES WILL CAPTURE YOUR
IMAGINATION AND THRILL YOUR SENSES.



INTERIOR COMFORT

Lamima's interior has been specifically designed to accommodate 14 guests in absolute comfort. Each of the seven spacious and elegant cabins, furnished around a central theme of relaxed luxury with hints of Indonesian tradition, has a luxurious en-suite bathroom and ample storage for guests' personal belongings.



The Lamima Experience

STEP ON BOARD OUR LUXURY YACHT LAMIMA AND EXPERIENCE LIFE ONBOARD THIS AUTHENTIC WOODEN PHINISI.

Lamima's construction combines traditional Indonesian boat building with modern yacht technology and design for your comfort and leisure. Be embraced by the warm hospitality of our local Indonesian crew and sail away to explore a new unspoilt paradise. The use of all amenities and participation in activities is complimentary to all guests on board.



OUR FRIENDLY CREW

Our wonderful crew have been carefully selected from leading hospitality and marine institutions in Indonesia. The high levels of service they offer combined with their typically Indonesian warmth and kindness ensure each guest's stay onboard Lamima will be a truly unforgettable and authentic experience.



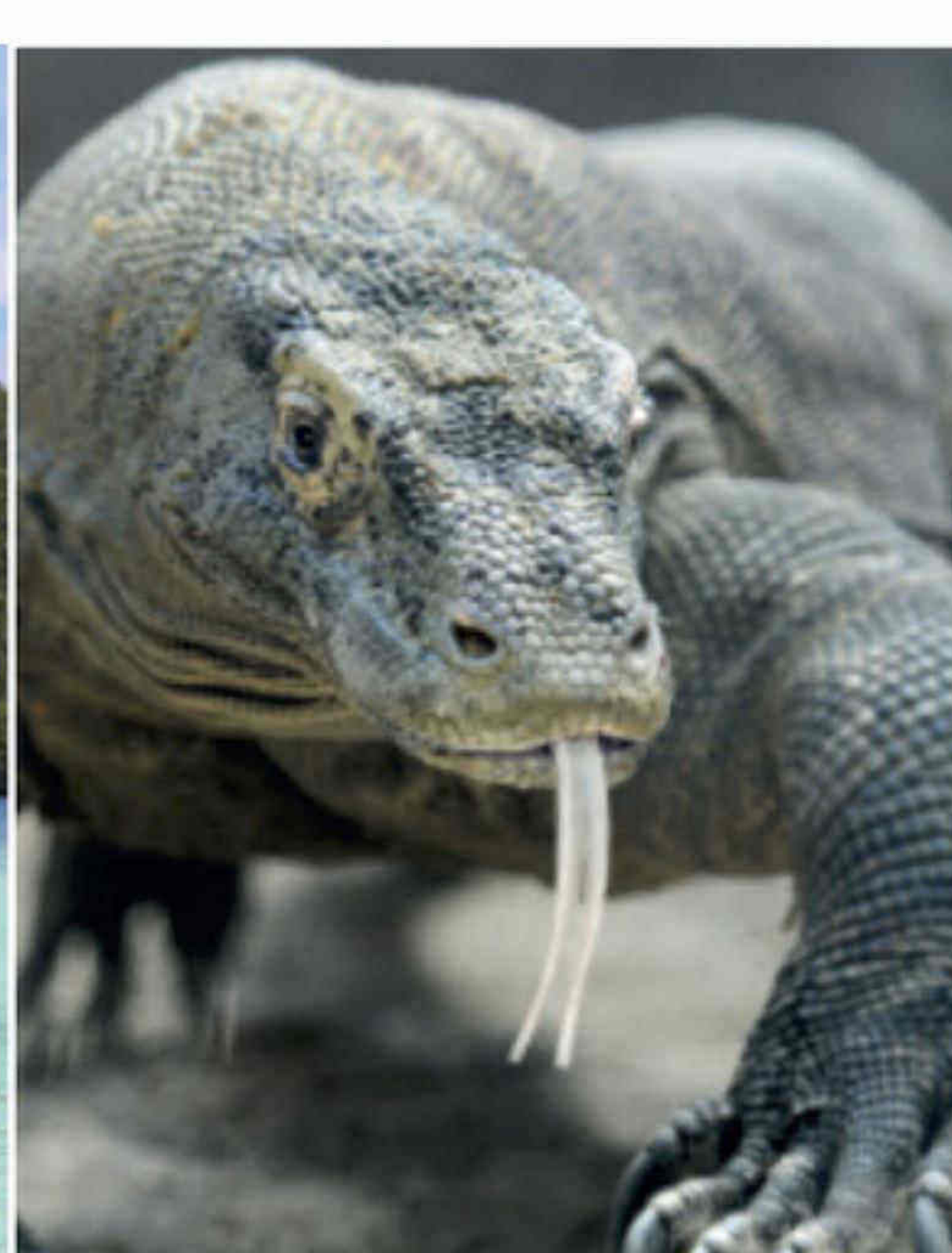
FINE DINING

Enjoy delicious Asian and European cuisine from our gourmet chefs who take pride in sourcing the freshest, quality ingredients from top Indonesian suppliers, local markets and fishermen. A selection of soft drinks, cocktails, wines and after dinner liqueurs is available on a complimentary basis from the bar.



RELAXATION

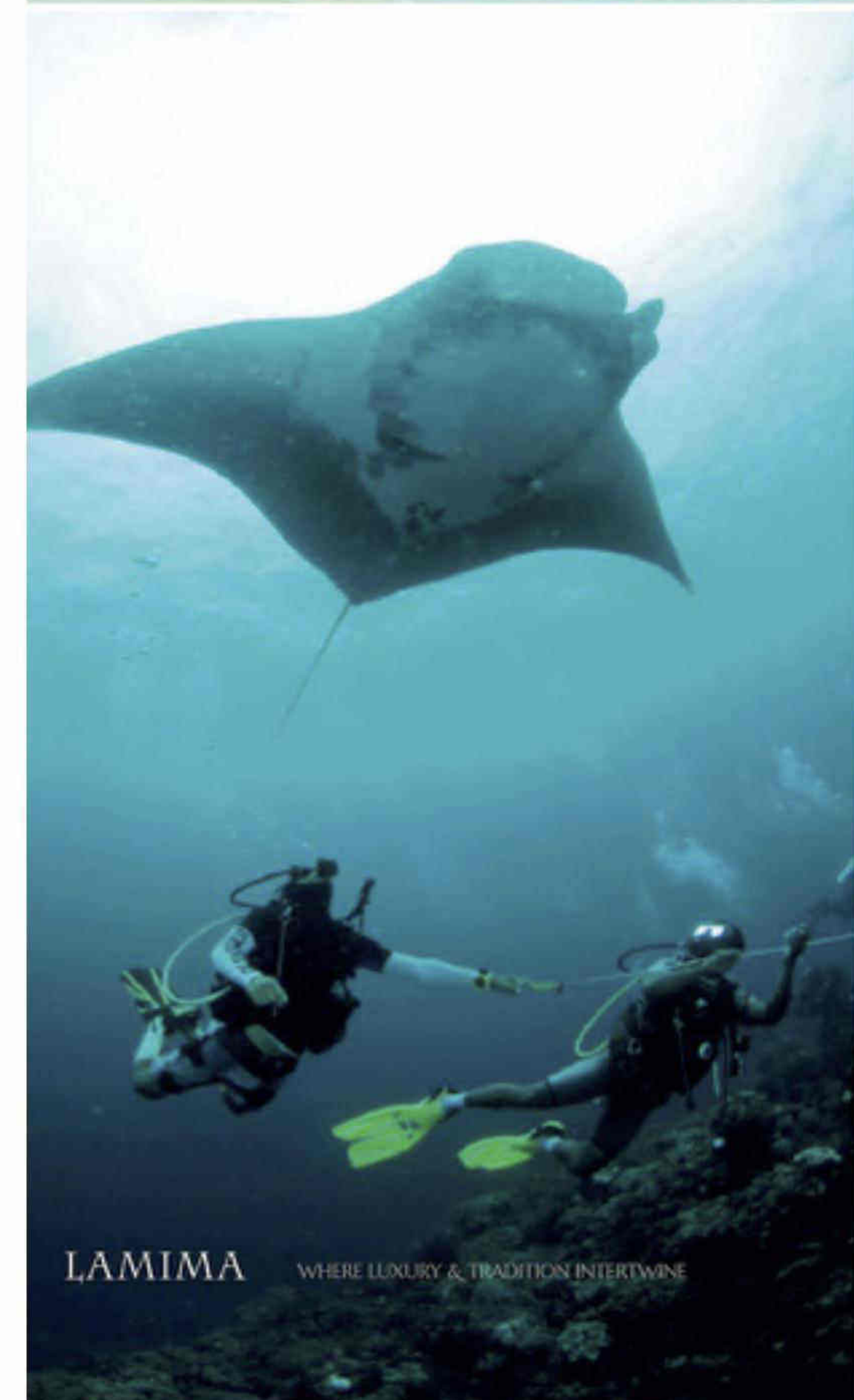
The stern section of the main deck is Lamima's dedicated relaxation quarter where you can enjoy a leisurely massage or treatment from our Indonesian spa therapists. The upper deck is the perfect spot for a sunrise yoga session while the spacious main deck has been custom designed for al fresco dining and relaxing.



ACTIVITIES

All of Lamima's water sports equipment is available to use on a complimentary basis. Enjoy stand-up paddle boarding or kayaking through a tranquil lagoon or catch a thrill speeding across the sparkling waters on a wakeboard or jetski.

- **Three tenders: 11m, 7m & 5m.**
- **Two Yamaha jetskis.**
- **Diving & snorkelling gear for 14 guests**
(Two PADI instructors & Bauer Nitrox compressor).
- **Waterskis, wakeboards and a surf board.**
- **Six stand-up paddle boards, two 2 person Sea Kayaks and two Jukungs** (Indonesian canoes).



DIVING

Our onboard PADI dive-centre is fully equipped to handle all your diving needs, whether you are a proficient or first time diver (including perhaps completing your PADI certification whilst onboard). Our certified PADI guides have chosen the best diving locations in Indonesia, Thailand and Myanmar which are renowned for their marine biodiversity.

EXCURSIONS

Explore deserted beaches and secret caves, climb island peaks for panoramic views and discover the native flora and fauna. Share the local guide's knowledge and insight about the delicate balance between nature and those who live there.

Along the way we will make landfall and visit local villages, rich in culture and tradition. Our guests will witness authentic daily life, with the opportunity to take part in some local festivities.

Lamima's Specification

THE PERFECT COMBINATION OF TRADITIONAL BUILDING TECHNIQUES AND SUPERB MODERN AMENITIES

Designed by renowned yacht designer Marcelo Penna of Barcelona and crafted in local hardwood by traditional boat builders in Indonesia, Lamima is the only Phinisi ever built to hold an international class safety certificate.

MAIN FEATURES

- World's largest wooden sailing yacht.
- The only phinisi yacht with International safety class certificate RINA (Registro Italiana Naval) .
- Seven staterooms, all with ensembles.
- Contemporary Asian interiors.
- Spacious decks with shaded relaxation areas.
- PADI dive centre with two PADI instructors.
- Two Indonesian gourmet chefs.
- Spa with two Balinese masseuses.
- Expert tour guide.

TECHNICAL DETAILS

Built: **2014 by Haji Baso & Haji Saka**

Constructed from: **Ironwood & Teak**

Length Overall: **65.2m**

Beam: **11.2m**

Engine: **Man 1000hp/735 kW**

Max speed: **10 knots**

Cruising speed: **8 knots**

Crew: **19**

Guests: **14 guests – one double master suite (ensuite & dressing room), four double cabins (ensuite) and two twin cabins (ensuite).**

Three Tenders:

Rib 11.2 meters with 400 HP jet drive

Rib 7 meters with 100HP outboard

Rib 5 meters with 40HP outboard

